

1) Status of the notification

Final

2) Issuer

Name PROXIMUS
Identification number 0202-239-951

3) Reason for the notification

Acquisition or disposal of financial instruments that are treated as voting securities

4) Notification by

A parent undertaking or a controlling person

5) Persons subject to the notification requirement

Name	Address (for legal entities)
The Goldman Sachs Group, Inc.	Corporation Trust Center, 1209 Orange Street, Wilmington, DE 19801, USA

6) Persons that dispose of voting rights (only to be filled in if art. 7 of the Law applies)

Name	Address (for legal entities)

Please continue entering the information in **part II** concerning the persons referred to in Sections 5 and 6

Part II

7) Date on which the threshold is crossed

06/05/2024 (DD/MM/YYYY)

8) Threshold that is crossed (in %)

7.5

If the holding has fallen below the lowest threshold, you have the option of not entering any numbers in Section 10

9) Denominator

338,025,135

Please enter the denominator before filling in the data

10) Notified details

A) Voting rights	Previous notification	After the transaction			
		# of voting rights	# of voting rights		% of voting rights
Holder of voting rights		Linked to securities	Not linked to the securities	Linked to securities	Not linked to the securities
The Goldman Sachs Group, Inc.	0	0		0.00%	
Goldman Sachs International	695,214				
Goldman Sachs Asset Management Holdings B.V.	1,493,241	1,493,241		0.44%	
Goldman Sachs Bank Europe SE	2,604	1,409		0.00%	
Goldman Sachs Asset Management, L.P.	21,440	13,251		0.00%	
Goldman Sachs Asset Management International	2,161	2,161		0.00%	

Goldman Sachs & Co. LLC	20				
Subtotal	2,214,680	1,510,062		0.45%	
TOTAL		1,510,062	0	0.45%	0.00%




i Start with "groups" of holders. Add subtotals with Σ , and then finish with the persons who are "alone".
 For groups, start with the ultimate controlling natural person or legal entity.
 The totals, subtotals and % will be updated once you have clicked on **<CALCULATE>**.

B) Equivalent financial instruments	After the transaction					
Holders of equivalent financial instruments	Type of financial instrument	Expiration date	Exercise period or date	# of voting rights that may be acquired if the instrument is exercised	% of voting rights	Settlement
Goldman Sachs International	Call Option	12/11/2026		119,412	0.04%	Physical
Goldman Sachs International	Call Option	06/01/2027		119,412	0.04%	Physical
Goldman Sachs International	Call Option	18/02/2027		119,412	0.04%	Physical
Goldman Sachs International	Call Option	22/09/2026		119,412	0.04%	Physical
Goldman Sachs International	Call Option	25/09/2026		119,412	0.04%	Physical
Goldman Sachs International	Call Option	05/02/2027		119,412	0.04%	Physical
Goldman Sachs International	Call Option	30/09/2026		119,412	0.04%	Physical
Goldman Sachs International	Call Option	29/10/2026		119,412	0.04%	Physical
Goldman Sachs International	Call Option	21/01/2027		119,412	0.04%	Physical
Goldman Sachs International	Call Option	11/09/2026		119,412	0.04%	Physical
Goldman Sachs International	Call Option	23/09/2026		119,412	0.04%	Physical
Goldman Sachs International	Call Option	23/11/2026		119,412	0.04%	Physical
Goldman Sachs International	Call Option	22/01/2027		119,412	0.04%	Physical
Goldman Sachs International	Call Option	06/10/2026		119,412	0.04%	Physical
Goldman Sachs International	Call Option	04/02/2027		119,412	0.04%	Physical
Goldman Sachs International	Call Option	18/01/2027		119,412	0.04%	Physical
Goldman Sachs International	Call Option	02/10/2026		119,412	0.04%	Physical
Goldman Sachs International	Call Option	11/11/2026		119,412	0.04%	Physical
Goldman Sachs International	Call Option	11/03/2027		119,412	0.04%	Physical
Goldman Sachs International	Call Option	17/12/2026		119,412	0.04%	Physical
Goldman Sachs International	Call Option	25/11/2026		119,412	0.04%	Physical
Goldman Sachs International	Call Option	01/12/2026		119,412	0.04%	Physical
Goldman Sachs International	Call Option	17/02/2027		119,412	0.04%	Physical
Goldman Sachs International	Call Option	06/11/2026		119,412	0.04%	Physical
Goldman Sachs International	Call Option	13/01/2027		119,412	0.04%	Physical
Goldman Sachs International	Call Option	27/11/2026		119,412	0.04%	Physical
Goldman Sachs International	Call Option	01/03/2027		119,412	0.04%	Physical
Goldman Sachs International	Call Option	20/10/2026		119,412	0.04%	Physical
Goldman Sachs International	Call Option	04/01/2027		119,412	0.04%	Physical
Goldman Sachs International	Call Option	12/01/2027		119,412	0.04%	Physical
Goldman Sachs International	Call Option	14/12/2026		119,412	0.04%	Physical
Goldman Sachs International	Call Option	16/09/2026		119,412	0.04%	Physical
Goldman Sachs International	Call Option	08/10/2026		119,412	0.04%	Physical
Goldman Sachs International	Call Option	05/10/2026		119,412	0.04%	Physical
Goldman Sachs International	Call Option	09/10/2026		119,412	0.04%	Physical
Goldman Sachs International	Call Option	11/01/2027		119,412	0.04%	Physical
Goldman Sachs International	Call Option	08/09/2026		119,412	0.04%	Physical
Goldman Sachs International	Call Option	11/12/2026		119,412	0.04%	Physical
Goldman Sachs International	Call Option	05/11/2026		119,412	0.04%	Physical
Goldman Sachs International	Call Option	10/11/2026		119,412	0.04%	Physical
Goldman Sachs International	Call Option	17/09/2026		119,412	0.04%	Physical
Goldman Sachs International	Call Option	03/03/2027		119,412	0.04%	Physical
Goldman Sachs International	Call Option	25/01/2027		119,412	0.04%	Physical
Goldman Sachs International	Call Option	03/02/2027		119,412	0.04%	Physical
Goldman Sachs International	Call Option	28/01/2027		119,412	0.04%	Physical

Goldman Sachs International	Call Option	16/07/2026		119,411	0.04%	Physical	-
Goldman Sachs International	Call Option	19/08/2026		119,411	0.04%	Physical	-
Goldman Sachs International	Call Option	11/08/2026		119,411	0.04%	Physical	-
Goldman Sachs International	Call Option	17/08/2026		119,411	0.04%	Physical	-
Goldman Sachs International	Call Option	13/08/2026		119,411	0.04%	Physical	-
Goldman Sachs International	Call Option	30/07/2026		119,411	0.04%	Physical	-
Goldman Sachs International	Call Option	21/07/2026		119,411	0.04%	Physical	-
Goldman Sachs International	Call Option	27/08/2026		119,411	0.04%	Physical	-
Goldman Sachs International	Call Option	26/08/2026		119,411	0.04%	Physical	-
Goldman Sachs International	Call Option	20/08/2026		119,411	0.04%	Physical	-
Goldman Sachs International	Call Option	07/08/2026		119,411	0.04%	Physical	-
Goldman Sachs International	Call Option	03/09/2026		119,411	0.04%	Physical	-
Goldman Sachs International	Call Option	01/09/2026		119,411	0.04%	Physical	-
Goldman Sachs International	Call Option	02/09/2026		119,411	0.04%	Physical	-
Goldman Sachs International	Call Option	22/07/2026		119,411	0.04%	Physical	-
Goldman Sachs International	Call Option	12/08/2026		119,411	0.04%	Physical	-
Goldman Sachs International	Call Option	07/09/2026		119,411	0.04%	Physical	-
Goldman Sachs International	Call Option	29/07/2026		119,411	0.04%	Physical	-
Goldman Sachs International	Call Option	04/09/2026		119,411	0.04%	Physical	-
Goldman Sachs International	Call Option	18/08/2026		119,411	0.04%	Physical	-
Goldman Sachs International	Call Option	15/07/2026		119,411	0.04%	Physical	-
Goldman Sachs International	Call Option	24/08/2026		119,411	0.04%	Physical	-
Goldman Sachs International	Call Option	14/08/2026		119,411	0.04%	Physical	-
Goldman Sachs Bank Europe SE	Swap	02/08/2024		42,715	0.01%	Cash	-
Goldman Sachs Bank Europe SE	Call Warrant	31/12/2030		30,000	0.01%	cash	-
Goldman Sachs International	Swap	02/05/2034		27,105	0.01%	Cash	-
Goldman Sachs International	Swap	02/05/2034		21,798	0.01%	Cash	-
Goldman Sachs International	Swap	24/04/2034		20,939	0.01%	Cash	-
Goldman Sachs International	Swap	02/05/2034		19,106	0.01%	Cash	-
Goldman Sachs Bank Europe SE	Call Warrant	31/12/2030		13,000	0.00%	cash	-
Goldman Sachs Bank Europe SE	Call Warrant	31/12/2030		9,605	0.00%	cash	-
Goldman Sachs Bank Europe SE	Call Warrant	31/12/2030		7,325	0.00%	cash	-
Goldman Sachs International	Swap	16/02/2034		6,813	0.00%	Cash	-
Goldman Sachs International	Swap	03/05/2034		6,045	0.00%	Cash	-
Goldman Sachs International	Swap	29/01/2030		5,860	0.00%	Cash	-
Goldman Sachs Bank Europe SE	Call Warrant	31/12/2030		5,000	0.00%	cash	-
Goldman Sachs Bank Europe SE	Call Warrant	31/12/2030		5,000	0.00%	cash	-
Goldman Sachs Bank Europe SE	Call Warrant	31/12/2030		5,000	0.00%	cash	-
Goldman Sachs International	Swap	29/01/2030		4,950	0.00%	Cash	-
Goldman Sachs International	Swap	25/04/2029		1,548	0.00%	Cash	-
Goldman Sachs International	Swap	02/05/2034		1,019	0.00%	Cash	-
Goldman Sachs Bank Europe SE	Call Warrant	31/12/2030		1,000	0.00%	cash	-
Goldman Sachs Bank Europe SE	Call Warrant	31/12/2030		1,000	0.00%	cash	-
Goldman Sachs International	Swap	16/02/2034		989	0.00%	Cash	-
Goldman Sachs Bank Europe SE	Call Warrant	31/12/2030		700	0.00%	cash	-
Goldman Sachs International	Swap	02/08/2024		646	0.00%	Cash	-
Goldman Sachs International	Swap	24/04/2034		369	0.00%	Cash	-
Goldman Sachs Bank Europe SE	Call Warrant	31/12/2030		240	0.00%	cash	-
Goldman Sachs International	Swap	24/04/2034		200	0.00%	Cash	-
Goldman Sachs International	Swap	24/04/2034		98	0.00%	cash	-
Goldman Sachs International	Swap	02/08/2024		4	0.00%	cash	-

Goldman Sachs International	Securities Lending		Open	4,584,157	1.36%	physical	-
Goldman Sachs & Co. LLC	Securities Lending		Open	7,663	0.00%	physical	+
TOTAL				25,129,895	7.43%		

 **The totals** will be updated once you have clicked on <CALCULATE>

TOTAL (A & B)	# of voting rights	% of voting rights
	CALCULATE	26,639,957
		7.88%

11) Full chain of controlled undertakings through which the holding is effectively held, if applicable

Please refer to Annexure - Structure Chart

12) In case of proxy voting for only one GM

Holder will cease to hold / will hold again 0 voting rights as of (DD/MM/YYYY)

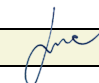
13) Additional information

With reference to the items mentioned in Section 10B:
 - "Call/Put Option" mentioned in rows 67 to 236 – these are call/put options relating to the same shares and forming part of a single transaction. Goldman Sachs International has granted the put options and acquired the call options over 20,300,000 shares in Proximus SA.
 - "Call Warrants" and "Swaps" mentioned in rows 237 to 264 - these are held by the corresponding entities where Goldman Sachs has a long exposure

Done at Warsaw

On 10/05/2024 (DD/MM/YYYY)

Name & capacity Andrzej Szyszka, Executive Director

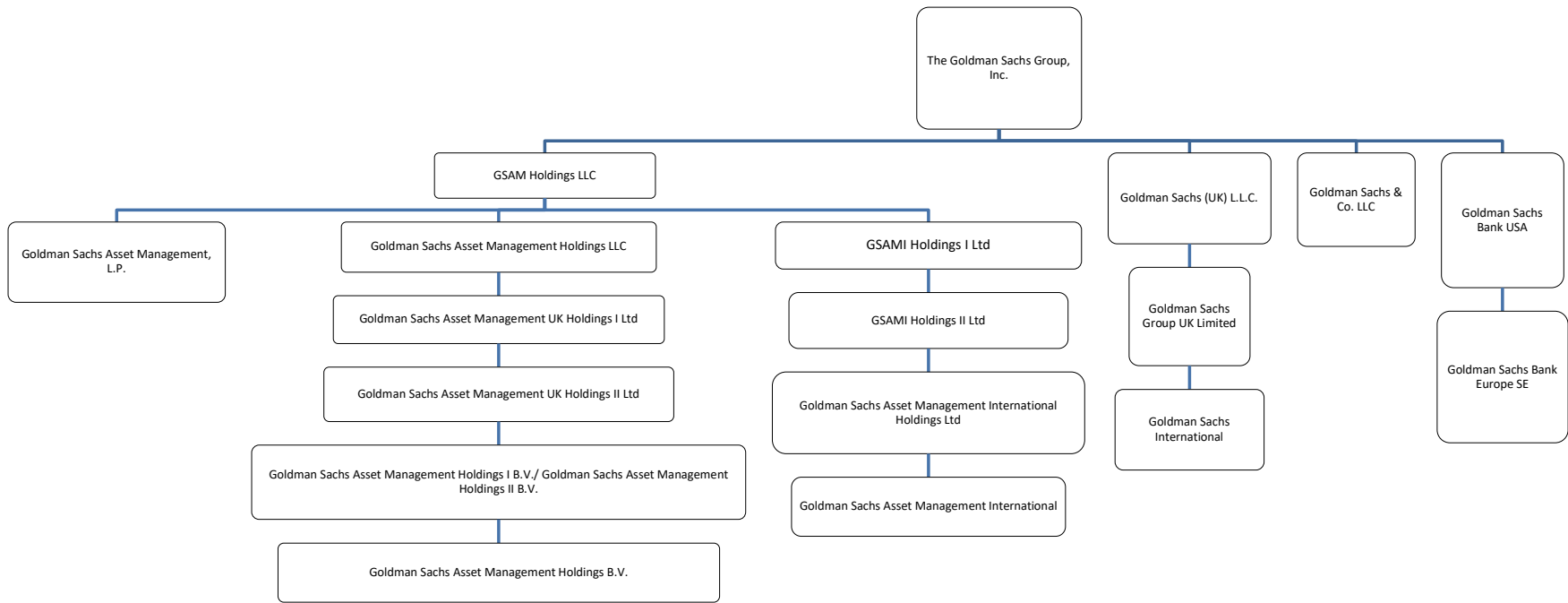
Signature 

For security reasons, the unsigned form in xlsx format should be transmitted to trp.fin@fsma.be. You can do this manually OR if you have MS Outlook at your disposal via the "Save & Send" button.

In addition, a signed copy in PDF format should also be transmitted.

Chain of Controlled Undertakings:

- GOLDMAN SACHS INTERNATIONAL IS CONTROLLED BY GOLDMAN SACHS GROUP UK LIMITED WHICH IS CONTROLLED BY GOLDMAN SACHS (UK) L.L.C. WHICH IS CONTROLLED BY THE GOLDMAN SACHS GROUP, INC.
- GOLDMAN SACHS ASSET MANAGEMENT, L.P. IS CONTROLLED BY GSAM HOLDINGS LLC WHICH IS CONTROLLED BY THE GOLDMAN SACHS GROUP, INC.
- GOLDMAN SACHS ASSET MANAGEMENT INTERNATIONAL IS CONTROLLED BY GOLDMAN SACHS ASSET MANAGEMENT INTERNATIONAL HOLDINGS LTD WHICH IS CONTROLLED BY GSAMI HOLDINGS II LTD. WHICH IS CONTROLLED BY GSAMI HOLDINGS I LTD WHICH IS CONTROLLED BY GSAM HOLDINGS LLC WHICH IS CONTROLLED BY THE GOLDMAN SACHS GROUP, INC.
- GOLDMAN SACHS BANK EUROPE SE IS CONTROLLED BY GOLDMAN SACHS BANK USA WHICH IS CONTROLLED BY THE GOLDMAN SACHS GROUP, INC.
- GOLDMAN SACHS ASSET MANAGEMENT HOLDINGS B.V. IS CONTROLLED BY GOLDMAN SACHS ASSET MANAGEMENT HOLDINGS I B.V. / GOLDMAN SACHS ASSET MANAGEMENT HOLDINGS II B.V. WHICH IS CONTROLLED BY GOLDMAN SACHS ASSET MANAGEMENT UK HOLDINGS II LTD WHICH IS CONTROLLED BY GOLDMAN SACHS ASSET MANAGEMENT UK HOLDINGS I LTD WHICH IS CONTROLLED BY GOLDMAN SACHS ASSET MANAGEMENT HOLDINGS LLC WHICH IS CONTROLLED BY GSAM HOLDINGS LLC WHICH IS CONTROLLED BY THE GOLDMAN SACHS GROUP, INC.
- GOLDMAN SACHS & CO. LLC IS CONTROLLED BY THE GOLDMAN SACHS GROUP, INC.



Note: The above structure chart reflecting the chain of controlled undertakings is based on voting rights only. For the purpose of aggregation and representation, only entities that have more than 50% of the voting shares are regarded as a controlled undertaking under the substantial shareholder disclosure rules. The structure chart comprises only GS entities which are part of the notification.