

1) Status of the notification

Final

2) Issuer

Name: PROXIMUS  
Identification number: 0202-239-951

3) Reason for the notification

Acquisition or disposal of financial instruments that are treated as voting securities

4) Notification by

A parent undertaking or a controlling person

5) Persons subject to the notification requirement

Name	Address (for legal entities)
The Goldman Sachs Group, Inc	Corporation Truse Center, 1209 Orange Street, Wilmington, DE 19801, USA

6) Persons that dispose of voting rights (only to be filled in if art. 7 of the Law applies)

Name	Address (for legal entities)

Please continue entering the information in **part II** concerning the persons referred to in Sections 5 and 6

Part II

7) Date on which the threshold is crossed

17/01/2025 (DD/MM/YYYY)

8) Threshold that is crossed (in %)

7.5

If the holding has fallen below the lowest threshold, you have the option of not entering any numbers in Section 10

9) Denominator


338,025,135

Please enter the denominator before filling in the data

10) Notified details

A) Voting rights	Previous notification	After the transaction			
	# of voting rights	# of voting rights		% of voting rights	
Holders of voting rights		Linked to securities	Not linked to the securities	Linked to securities	Not linked to the securities
The Goldman Sachs Group, Inc.	0	0		0.00%	
Goldman Sachs Asset Management B.V.	1,860,261	1,856,764		0.55%	
Goldman Sachs Asset Management, L.P.	258,029	114,367		0.03%	
Goldman Sachs Bank Europe SE	5,175	5,110		0.00%	

Goldman Sachs Asset Management International	34,596	2,226		0.00%		-
Goldman Sachs & Co. LLC	14	14		0.00%		-
Subtotal	2,158,076	1,978,481		0.59%		+
<b>TOTAL</b>		<b>1,978,481</b>	<b>0</b>	<b>0.59%</b>	<b>0.00%</b>	

 Start with "groups" of holders. Add subtotals with  $\Sigma$ , and then finish with the persons who are "alone".  
For groups, start with the ultimate controlling natural person or legal entity.  
The totals, subtotals and % will be updated once you have clicked on **<CALCULATE>**.

B) Equivalent financial instruments	After the transaction						
	Holders of equivalent financial instruments	Type of financial instrument	Expiration date	Exercise period or date	# of voting rights that may be acquired if the instrument is exercised	% of voting rights	
Goldman Sachs International	Call/Put Option	08/09/2026		119,412	0.04%	physical	-
Goldman Sachs International	Call/Put Option	09/09/2026		119,412	0.04%	physical	-
Goldman Sachs International	Call/Put Option	10/09/2026		119,412	0.04%	physical	-
Goldman Sachs International	Call/Put Option	11/09/2026		119,412	0.04%	physical	-
Goldman Sachs International	Call/Put Option	14/09/2026		119,412	0.04%	physical	-
Goldman Sachs International	Call/Put Option	15/09/2026		119,412	0.04%	physical	-
Goldman Sachs International	Call/Put Option	16/09/2026		119,412	0.04%	physical	-
Goldman Sachs International	Call/Put Option	17/09/2026		119,412	0.04%	physical	-
Goldman Sachs International	Call/Put Option	18/09/2026		119,412	0.04%	physical	-
Goldman Sachs International	Call/Put Option	21/09/2026		119,412	0.04%	physical	-
Goldman Sachs International	Call/Put Option	22/09/2026		119,412	0.04%	physical	-
Goldman Sachs International	Call/Put Option	23/09/2026		119,412	0.04%	physical	-
Goldman Sachs International	Call/Put Option	24/09/2026		119,412	0.04%	physical	-
Goldman Sachs International	Call/Put Option	25/09/2026		119,412	0.04%	physical	-
Goldman Sachs International	Call/Put Option	28/09/2026		119,412	0.04%	physical	-
Goldman Sachs International	Call/Put Option	29/09/2026		119,412	0.04%	physical	-
Goldman Sachs International	Call/Put Option	30/09/2026		119,412	0.04%	physical	-
Goldman Sachs International	Call/Put Option	01/10/2026		119,412	0.04%	physical	-
Goldman Sachs International	Call/Put Option	02/10/2026		119,412	0.04%	physical	-
Goldman Sachs International	Call/Put Option	05/10/2026		119,412	0.04%	physical	-
Goldman Sachs International	Call/Put Option	06/10/2026		119,412	0.04%	physical	-
Goldman Sachs International	Call/Put Option	07/10/2026		119,412	0.04%	physical	-
Goldman Sachs International	Call/Put Option	08/10/2026		119,412	0.04%	physical	-
Goldman Sachs International	Call/Put Option	09/10/2026		119,412	0.04%	physical	-
Goldman Sachs International	Call/Put Option	12/10/2026		119,412	0.04%	physical	-
Goldman Sachs International	Call/Put Option	13/10/2026		119,412	0.04%	physical	-
Goldman Sachs International	Call/Put Option	14/10/2026		119,412	0.04%	physical	-
Goldman Sachs International	Call/Put Option	15/10/2026		119,412	0.04%	physical	-
Goldman Sachs International	Call/Put Option	16/10/2026		119,412	0.04%	physical	-
Goldman Sachs International	Call/Put Option	19/10/2026		119,412	0.04%	physical	-
Goldman Sachs International	Call/Put Option	20/10/2026		119,412	0.04%	physical	-
Goldman Sachs International	Call/Put Option	21/10/2026		119,412	0.04%	physical	-
Goldman Sachs International	Call/Put Option	22/10/2026		119,412	0.04%	physical	-
Goldman Sachs International	Call/Put Option	23/10/2026		119,412	0.04%	physical	-
Goldman Sachs International	Call/Put Option	26/10/2026		119,412	0.04%	physical	-
Goldman Sachs International	Call/Put Option	27/10/2026		119,412	0.04%	physical	-
Goldman Sachs International	Call/Put Option	28/10/2026		119,412	0.04%	physical	-









Goldman Sachs Bank Europe SE	Call Warrant	31/12/2030		1,000	0.00%	cash	-
Goldman Sachs Bank Europe SE	Call Warrant	31/12/2030		800	0.00%	cash	-
Goldman Sachs Bank Europe SE	Call Warrant	31/12/2030		700	0.00%	cash	-
Goldman Sachs Bank Europe SE	Call Warrant	31/12/2030		545	0.00%	cash	-
Goldman Sachs Bank Europe SE	Call Warrant	31/12/2030		100	0.00%	cash	-
Goldman Sachs International	Swap	18/12/2034		135,084	0.04%	cash	-
Goldman Sachs International	Swap	20/12/2027		123,225	0.04%	cash	-
Goldman Sachs International	Swap	12/12/2034		121,580	0.04%	cash	-
Goldman Sachs International	Swap	18/12/2034		85,679	0.03%	cash	-
Goldman Sachs International	Swap	08/11/2034		69,183	0.02%	cash	-
Goldman Sachs International	Swap	11/09/2034		56,598	0.02%	cash	-
Goldman Sachs International	Swap	20/12/2034		52,867	0.02%	cash	-
Goldman Sachs International	Swap	20/11/2034		50,328	0.01%	cash	-
Goldman Sachs International	Swap	04/10/2027		47,827	0.01%	cash	-
Goldman Sachs International	Swap	30/04/2025		41,362	0.01%	cash	-
Goldman Sachs International	Swap	18/12/2034		40,688	0.01%	cash	-
Goldman Sachs International	Swap	18/12/2034		35,649	0.01%	cash	-
Goldman Sachs Bank Europe SE	Swap	15/04/2025		30,386	0.01%	cash	-
Goldman Sachs International	Swap	10/01/2028		30,025	0.01%	cash	-
Goldman Sachs International	Swap	08/12/2025		29,681	0.01%	cash	-
Goldman Sachs International	Swap	07/03/2029		27,665	0.01%	cash	-
Goldman Sachs Bank Europe SE	Swap	16/04/2025		20,053	0.01%	cash	-
Goldman Sachs International	Swap	10/01/2035		10,395	0.00%	cash	-
Goldman Sachs Bank Europe SE	Swap	17/04/2025		8,300	0.00%	cash	-
Goldman Sachs International	Swap	13/12/2027		5,341	0.00%	cash	-
Goldman Sachs International	Swap	12/02/2025		4,897	0.00%	cash	-
Goldman Sachs International	Swap	13/12/2027		4,791	0.00%	cash	-
Goldman Sachs International	Swap	20/12/2027		3,873	0.00%	cash	-
Goldman Sachs International	Swap	16/12/2027		3,866	0.00%	cash	-
Goldman Sachs International	Swap	16/08/2034		3,720	0.00%	cash	-
Goldman Sachs International	Swap	13/12/2027		3,696	0.00%	cash	-
Goldman Sachs International	Swap	17/12/2027		3,610	0.00%	cash	-
Goldman Sachs International	Swap	20/12/2027		3,426	0.00%	cash	-
Goldman Sachs International	Swap	13/12/2027		3,226	0.00%	cash	-
Goldman Sachs International	Swap	20/12/2027		2,976	0.00%	cash	-
Goldman Sachs International	Swap	13/12/2027		2,670	0.00%	cash	-
Goldman Sachs International	Swap	16/12/2027		2,604	0.00%	cash	-
Goldman Sachs International	Swap	20/12/2027		2,564	0.00%	cash	-
Goldman Sachs International	Swap	10/01/2028		2,382	0.00%	cash	-
Goldman Sachs International	Swap	06/08/2027		2,302	0.00%	cash	-
Goldman Sachs International	Swap	20/12/2027		2,197	0.00%	cash	-
Goldman Sachs International	Swap	23/12/2027		2,082	0.00%	cash	-
Goldman Sachs International	Swap	13/12/2027		2,005	0.00%	cash	-
Goldman Sachs International	Swap	03/01/2028		1,947	0.00%	cash	-
Goldman Sachs International	Swap	05/08/2027		1,938	0.00%	cash	-
Goldman Sachs International	Swap	17/01/2028		1,911	0.00%	cash	-
Goldman Sachs International	Swap	16/08/2034		1,789	0.00%	cash	-
Goldman Sachs International	Swap	10/01/2028		1,770	0.00%	cash	-

Goldman Sachs International	Swap	03/01/2028		1,654	0.00%	cash	-
Goldman Sachs International	Swap	23/12/2027		1,553	0.00%	cash	-
Goldman Sachs International	Swap	03/01/2028		1,538	0.00%	cash	-
Goldman Sachs International	Swap	03/01/2028		1,451	0.00%	cash	-
Goldman Sachs International	Swap	05/08/2027		1,444	0.00%	cash	-
Goldman Sachs International	Swap	27/12/2027		1,410	0.00%	cash	-
Goldman Sachs International	Swap	06/01/2028		1,406	0.00%	cash	-
Goldman Sachs International	Swap	17/12/2027		1,398	0.00%	cash	-
Goldman Sachs International	Swap	30/12/2027		1,371	0.00%	cash	-
Goldman Sachs International	Swap	10/01/2028		1,303	0.00%	cash	-
Goldman Sachs International	Swap	20/12/2027		1,171	0.00%	cash	-
Goldman Sachs International	Swap	02/08/2027		1,166	0.00%	cash	-
Goldman Sachs International	Swap	29/10/2027		1,070	0.00%	cash	-
Goldman Sachs International	Swap	08/11/2027		1,056	0.00%	cash	-
Goldman Sachs International	Swap	06/01/2028		1,056	0.00%	cash	-
Goldman Sachs International	Swap	27/12/2027		1,055	0.00%	cash	-
Goldman Sachs International	Swap	10/12/2027		627	0.00%	cash	-
Goldman Sachs International	Swap	17/01/2028		347	0.00%	cash	-
Goldman Sachs International	Swap	10/01/2028		254	0.00%	cash	-
Goldman Sachs International	Swap	03/12/2027		181	0.00%	cash	-
Goldman Sachs International	Swap	30/12/2027		135	0.00%	cash	-
Goldman Sachs International	Swap	06/12/2027		69	0.00%	cash	-
Goldman Sachs International	Swap	02/12/2027		44	0.00%	cash	-
Goldman Sachs Bank Europe SE	Swap	15/04/2025		23	0.00%	cash	-
Goldman Sachs International	Swap	06/12/2027		7	0.00%	cash	-
Goldman Sachs International	Swap	03/12/2027		6	0.00%	cash	-
Goldman Sachs International	Swap	06/12/2027		5	0.00%	cash	-
Goldman Sachs International	Swap	22/05/2034		2	0.00%	cash	-
Goldman Sachs International	Securities Lending	Open		1,446,640	0.43%	cash	-
Goldman Sachs & Co. LLC	Securities Lending	Open		136,864	0.04%	cash	-
Goldman Sachs Bank Europe SE	Securities Lending	Open		228	0.00%	cash	+
<b>TOTAL</b>				<b>23,138,056</b>	<b>6.85%</b>		

 **The totals** will be updated once you have clicked on <CALCULATE>

TOTAL (A & B)	# of voting rights	% of voting rights
	<b>25,116,537</b>	<b>7.43%</b>

11) Full chain of controlled undertakings through which the holding is effectively held, if applicable

Please refer to Annexure - Structured Chart

12) In case of proxy voting for only one GM

Holder	<input type="text"/>	will cease to hold / will hold again	<input type="text"/>	0	voting rights as of	<input type="text"/>	(DD/MM/YYYY)
--------	----------------------	---	----------------------	---	---------------------	----------------------	--------------

13) Additional information

With reference to the items mentioned in Section 10B:  
- "Call/Put Option" mentioned in rows 66 to 235 – these are call/put options relating to the same shares and forming part of a single transaction. Goldman Sachs International has granted the put options and acquired the call options over 20,300,000 shares in Proximus SA.  
- "Call Warrants" and "Swaps" mentioned in rows 236 to 322- these are held by the corresponding entities where Goldman Sachs has a long exposure

Done at	<input type="text" value="Warsaw"/>
On	<input type="text" value="23/01/2025"/> (DD/MM/YYYY)
Name & capacity	<input type="text" value="Andrzej Szyszka, Executive Director"/>

Signature	<input type="text" value=""/>
-----------	-------------------------------

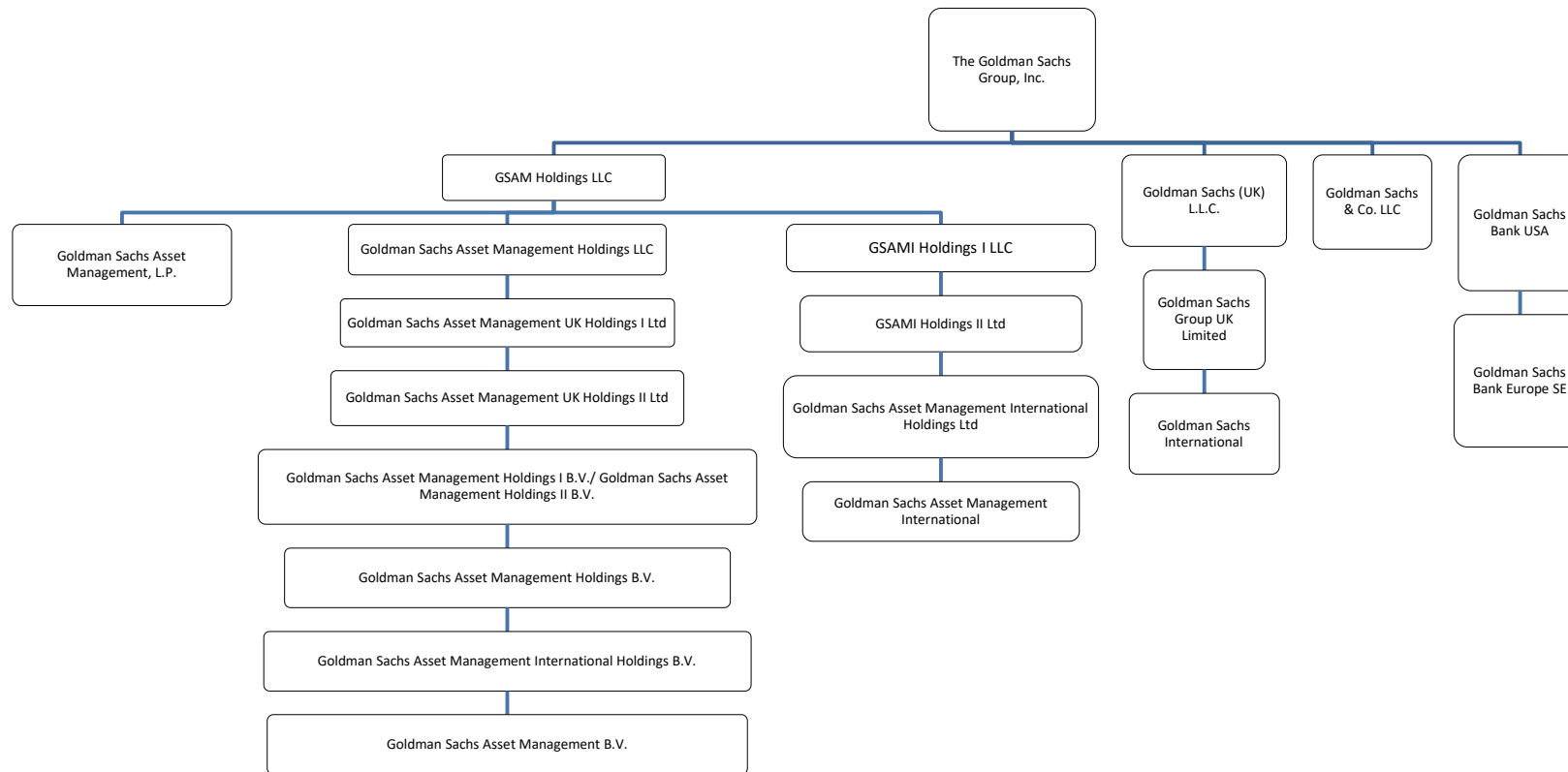
For security reasons, the unsigned form in xlsx format should be transmitted to [trp.fin@fsma.be](mailto:trp.fin@fsma.be). You can do this manually OR if you have MS Outlook at your disposal via the "Save & Send" button.

In addition, a signed copy in PDF format should also be transmitted.



Chain of Controlled Undertakings:

- GOLDMAN SACHS INTERNATIONAL IS CONTROLLED BY GOLDMAN SACHS GROUP UK LIMITED WHICH IS CONTROLLED BY GOLDMAN SACHS (UK) L.L.C. WHICH IS CONTROLLED BY THE GOLDMAN SACHS GROUP, INC.
- GOLDMAN SACHS ASSET MANAGEMENT, L.P. IS CONTROLLED BY GSAM HOLDINGS LLC WHICH IS CONTROLLED BY THE GOLDMAN SACHS GROUP, INC.
- GOLDMAN SACHS ASSET MANAGEMENT INTERNATIONAL IS CONTROLLED BY GOLDMAN SACHS ASSET MANAGEMENT INTERNATIONAL HOLDINGS LTD WHICH IS CONTROLLED BY GSAMI HOLDINGS II LTD. WHICH IS CONTROLLED BY GSAMI HOLDINGS I LLC WHICH IS CONTROLLED BY GSAM HOLDINGS LLC WHICH IS CONTROLLED BY THE GOLDMAN SACHS GROUP, INC.
- GOLDMAN SACHS BANK EUROPE SE IS CONTROLLED BY GOLDMAN SACHS BANK USA WHICH IS CONTROLLED BY THE GOLDMAN SACHS GROUP, INC.
- GOLDMAN SACHS ASSET MANAGEMENT B.V. IS CONTROLLED BY GOLDMAN SACHS ASSET MANAGEMENT INTERNATIONAL HOLDINGS B.V. WHICH IS CONTROLLED BY GOLDMAN SACHS ASSET MANAGEMENT HOLDINGS B.V. WHICH IS CONTROLLED BY GOLDMAN SACHS ASSET MANAGEMENT HOLDINGS I B.V. / GOLDMAN SACHS ASSET MANAGEMENT HOLDINGS II B.V. WHICH IS CONTROLLED BY GOLDMAN SACHS ASSET MANAGEMENT UK HOLDINGS II LTD WHICH IS CONTROLLED BY GOLDMAN SACHS ASSET MANAGEMENT UK HOLDINGS I LTD WHICH IS CONTROLLED BY GOLDMAN SACHS ASSET MANAGEMENT HOLDINGS LLC WHICH IS CONTROLLED BY GSAM HOLDINGS LLC WHICH IS CONTROLLED BY THE GOLDMAN SACHS GROUP, INC.



Note: The above structure chart reflecting the chain of controlled undertakings is based on voting rights only. For the purpose of aggregation and representation, only entities that have more than 50% of the voting shares are regarded as a controlled undertaking under the substantial shareholder disclosure rules. The structure chart comprises only GS entities which are part of the notification.